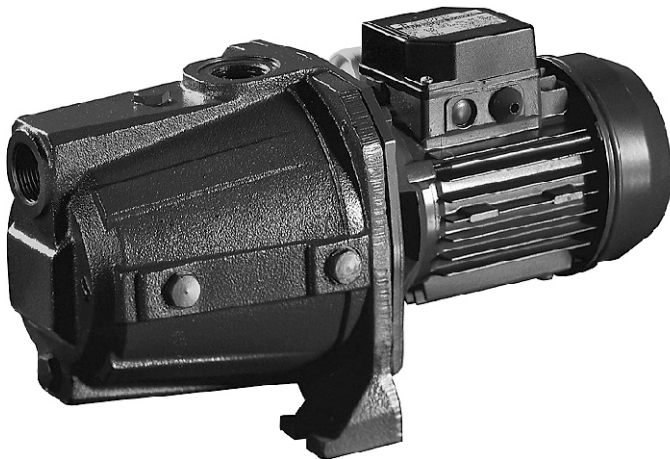




Model AGA/AGC

Cast Iron Jet Pumps



Specifications

- Shallow well jet pumps
- Maximum working pressure: 10 bar (6 bar AGA 1.00)
- Maximum liquid temperature: 45 °C

Materials

- Pump casing: Cast Iron
- Impeller: Noryl (AGA 1.00), Brass (AGA 1.50, AGC 2.00)
- Shaft: 303 Stainless Steel (wetted part)
- Bracket: Alum.(AGA 1.00), Cast Iron (AGA 1.50, AGC 2.00)
- Mechanical seal: Carbon/Ceramic/NBR

Motor Data

- TEFC, 2 pole, 50 Hz
- Insulation class F
- IP44 protection
- 1 Phase - 230 Volt
- Automatic thermal overload protection

Range

- 25 mm Ø discharge
- 0.75 to 1.5 kW - 1 Phase

Supply

- 1.8 m cable with 3 pin plug

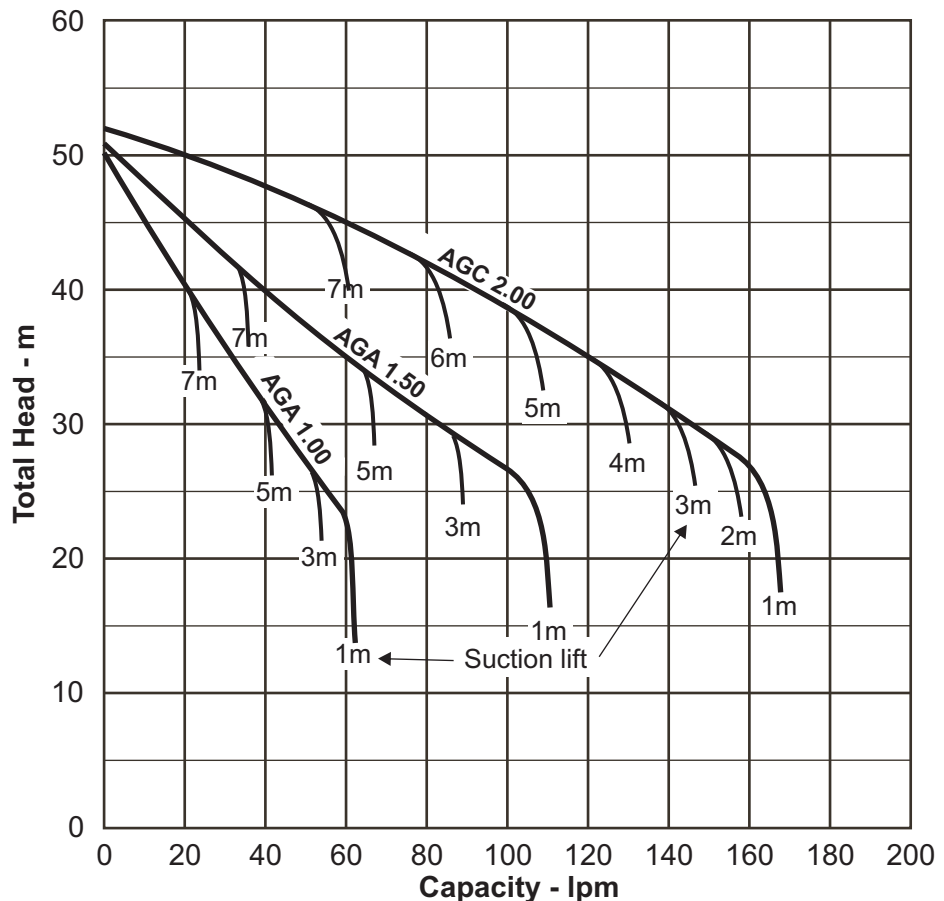
Self priming jet pumps manufactured in cast iron. Suitable for boosting or transfer of water, small scale irrigation, tank & pool emptying, etc.

Performance Curve

Synchronous Speed:
3000 rpm

Water temp:
20 °C

Applicable standard of test :
ISO 9906 Annex A



Model Code

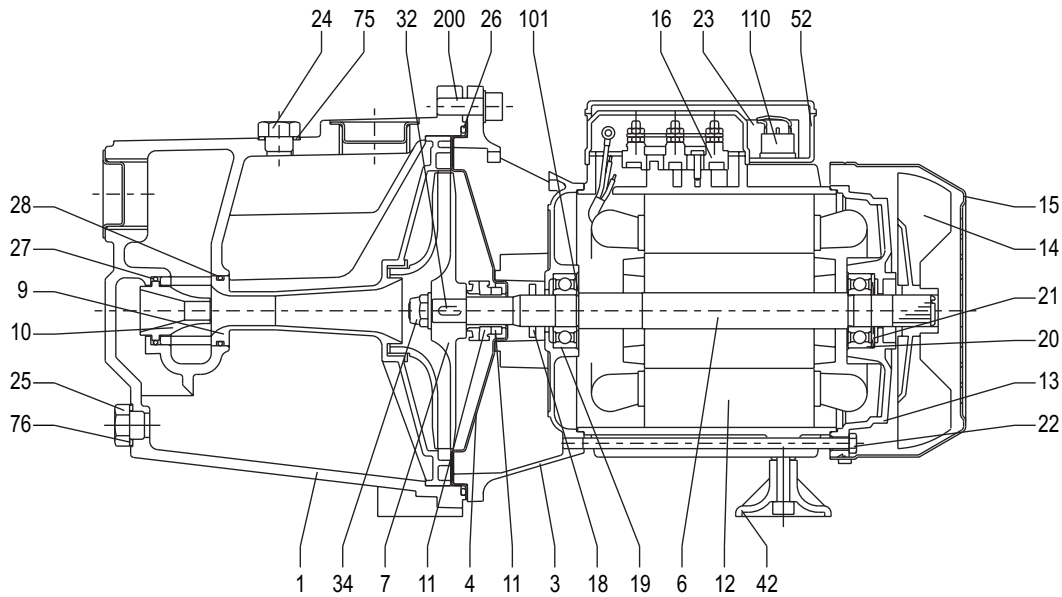
AGA 1.50 M
 M= Single Phase
 Motor Size (HP)
 Model AGA or AGC

Performance Table

Pump Model	Motor Output	Power Supply	Capacitor		Full Load Current	Capacity - lpm										
			µF	Vc		10	20	30	40	50	60	80	100	130	160	
AGA 1.00 M	0.75 kW	230 V, 50 Hz, 1 PH	20 µF	450 Vc	5.5 A	45	40.3	35.7	31.1	27	23					
AGA 1.50 M	1.1 kW	230 V, 50 Hz, 1 PH	35 µF	450 Vc	8.1 A	48	45.1	42.4	40.0	37.4	35.1	30.8	27.0			
AGC 2.00 M	1.5 kW	230 V, 50 Hz, 1 PH	40 µF	450 Vc	10.5 A	51	49.9	48.8	47.3	46.3	44.9	42	38.7	33.2	27	

Sectional Drawing

Model **AGA/AGC**



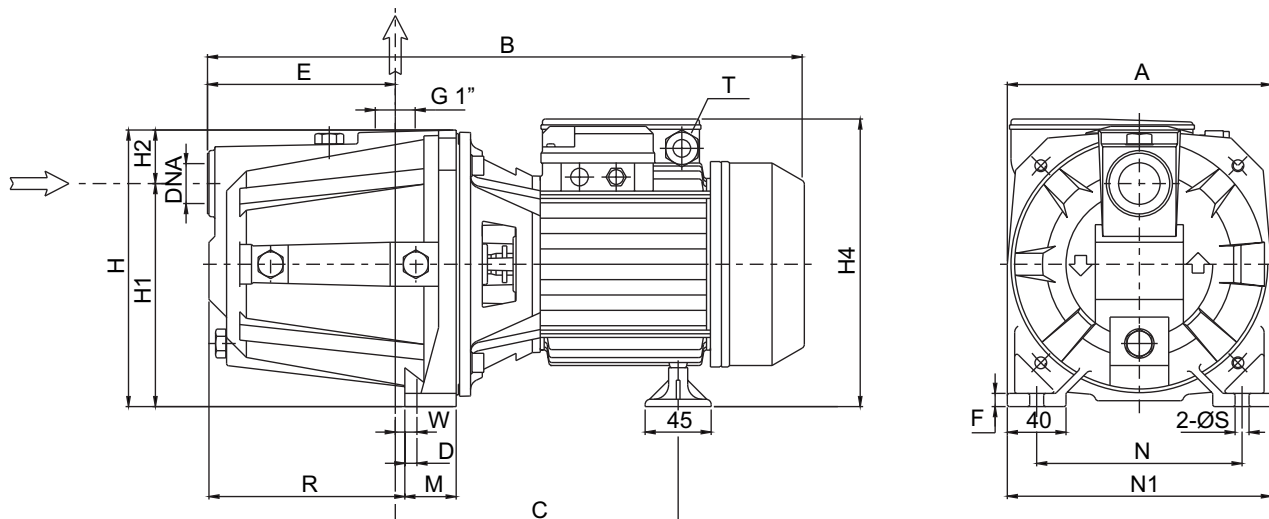
No.	Description	Material		Qty	No.	Description	Material		Qty	No.	Description	Material		Qty
		AGA 1.00M	AGA 1.50M AGC 2.00M				AGA 1.00M	AGA 1.50M AGC 2.00M				AGA 1.00M	AGA 1.50M AGC 2.00M	
1	Casing	Cast Iron		1	15	Fan cover	Fe P04 (Gal)		1	27	O-Ring	NBR		1
3	Motor bracket	Alum.	Cast Iron	1	16	Terminal block	-		1	28	O-Ring	NBR		1
4	Casing cover	304 S/S		1	18	Splash ring	NBR		1	32	Key	316 S/S		1
6	Shaft with rotor	303 S/S <small>(In contact with liquid)</small>		1	19	Pump side bearing	Sealed ball		1	34	Impeller nut	304 S/S		1
7	Impeller	PPE*	Brass	1	20	Fan side bearing	Sealed ball		1	42	Foot	PVC		1
9	Diffuser/Venturi tube	PPE*		1	21	Adjusting ring	Steel C70		1	52	Terminal box	ABS		1
10	Venturi nozzle	PPE*		1	22	Tie rod	Fe 420 (Gal)		4	75	Washer	Aluminium		1
11	Mechanical seal	Car/Cer/NBR		1	23	Capacitor	-		1	76	Washer	Aluminium		1
12	Motor frame & stator	-		1	24	Priming plug	Brass		1	101	Seeger ring	420 S/S		1
13	Motor cover	Aluminium		1	25	Drain plug	Brass		1	110	Protector	-		1
14	Fan	Polyamide		1	26	O-Ring	NBR		1	200	Screw	Zn Steel		4

PPE* = PPE + PS Glass fibre

Dimensions

Model **AGA/AGC**

Units: mm unless otherwise specified



Pump Model	Dimensions																	Weight kg	
	A	B	C	D	E	F	H	H1	H2	H4	M	N	N1	R	T	W	S		DNA
AGA 1.00 M	180	405	195	10.3	127	9	185	152	33	199	40	140	180	128.5	PG11	11.8	9.5	1"	14
AGA 1.50 M	220	508	244	10	157	10	223	170	53	247	48	180	220	167.5	PG13.5	15.5	9	1 1/2"	26
AGC 2.00 M	220	508	244	10	157	10	223	170	53	247	48	180	220	167.5	PG13.5	15.5	9	1 1/2"	27

Specifications subject to change without notice



EBARA PUMPS AUSTRALIA PTY. LTD.

Data Sheet
AGA,C 13-03