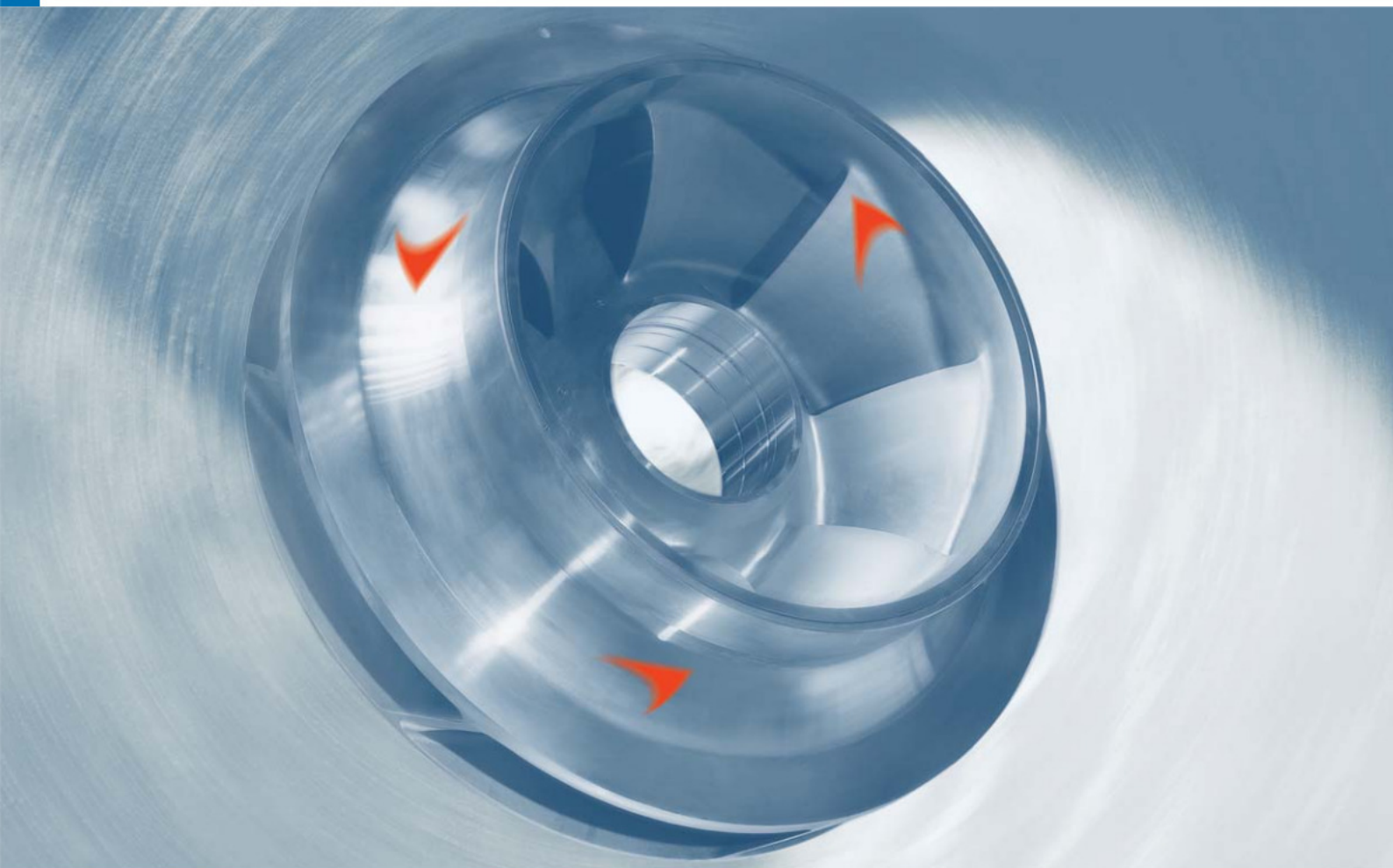




ANDRITZ Double-Suction Split Case Pump

FP/FPS/SFWP Series



High efficiency and low pulsation

For over 100 years ANDRITZ has been a byword for competence and innovation in the design of centrifugal pumps.

ANDRITZ Centrifugal Pumps meet the high customer requirements for efficiency, long life, maintenance-friendliness, and economy.

All pump components are manufactured in our own, ISO certified workshops, according to stringent quality standards. The standards are the backbone of the high quality of our products.

Water

With efficiencies of over 90%, ANDRITZ Double Suction Split Case Pumps permanently help to save valuable energy.

Fields of application:

- Cooling water, circulation water pumps power stations industrial plants district heating networks
- Raw water pumps for water treatment plants
- Drinking water pumps for water supply systems

Pulp and paper

As suppliers of complete production systems for the pulp and paper industry we have acquired broad expertise of the related process technologies.

The ANDRITZ Double Suction Pump is characterized by low pulsation and high efficiency.

Fields of application:

Conveyance of stock suspensions :

- Headbox pumps
- Cleaner pumps
- Filtrate and water pumps

The facts:

- Efficiency above 90%
- Flow rates up to 20.000 m³/h
- Heads up to 160 m
- Power up to 7.000 KW



Technology to convince you

The high standard of our centrifugal pumps from the Double Suction Pump Series stems from our long-term experience in hydraulic machine design and comprehensive process know-how.

Split volute casing

- Sealing of the upper and lower parts with O ring ensures short maintenance times

Shaft bearing for oil or grease lubrication

- Compact and robust bearing ensures ease of installation and long life
- Bearing replacement without dismantling the casing

Sealing systems

- Stuffing box
- Single or tandem mechanical seal
- Cartridge seal
- Split seal for short maintenance times

Sealing replacement without dismantling the casing!

Second shaft end

- For flexible choice of drive side
- Furnished as a standard, (in case of FP/FPS series)

Double-suction, bipartite impeller

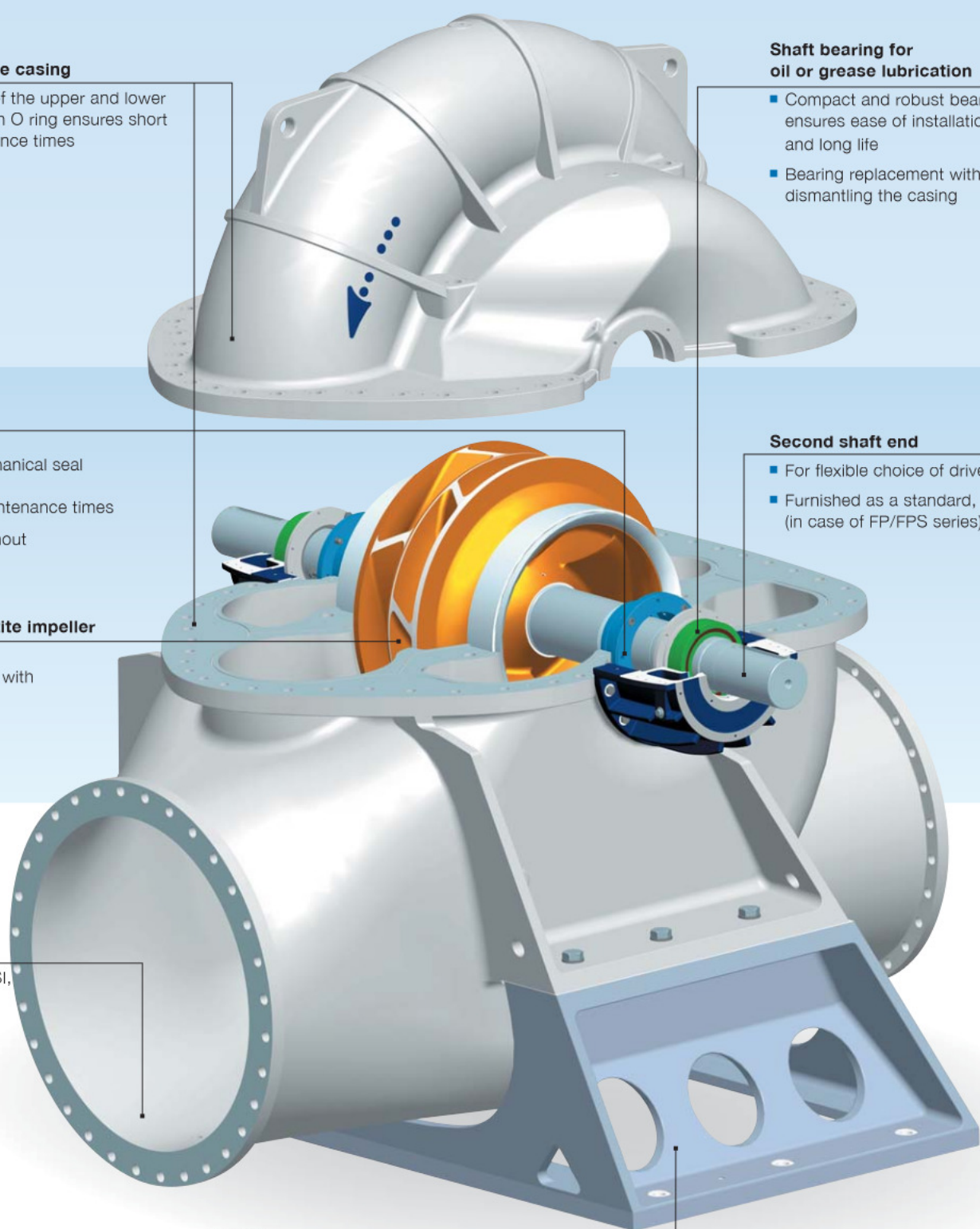
- Efficiency above 90%
- Low pulsation impeller with staggered blades

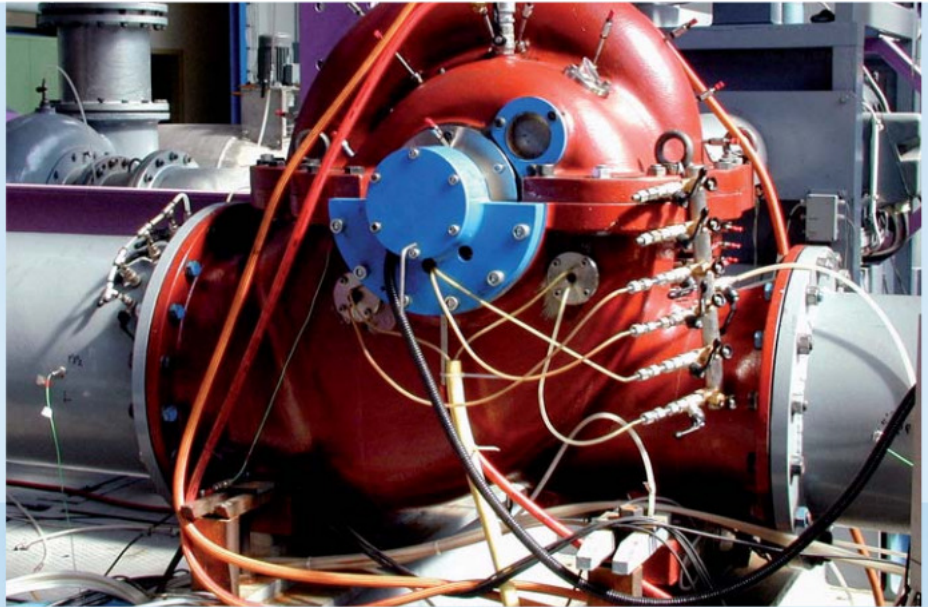
Connection flange

- According to DIN, ANSI, counter flange with polishing on demand

Pedestal

- Flexible and easy pump mounting
- Foundation with motor available on request



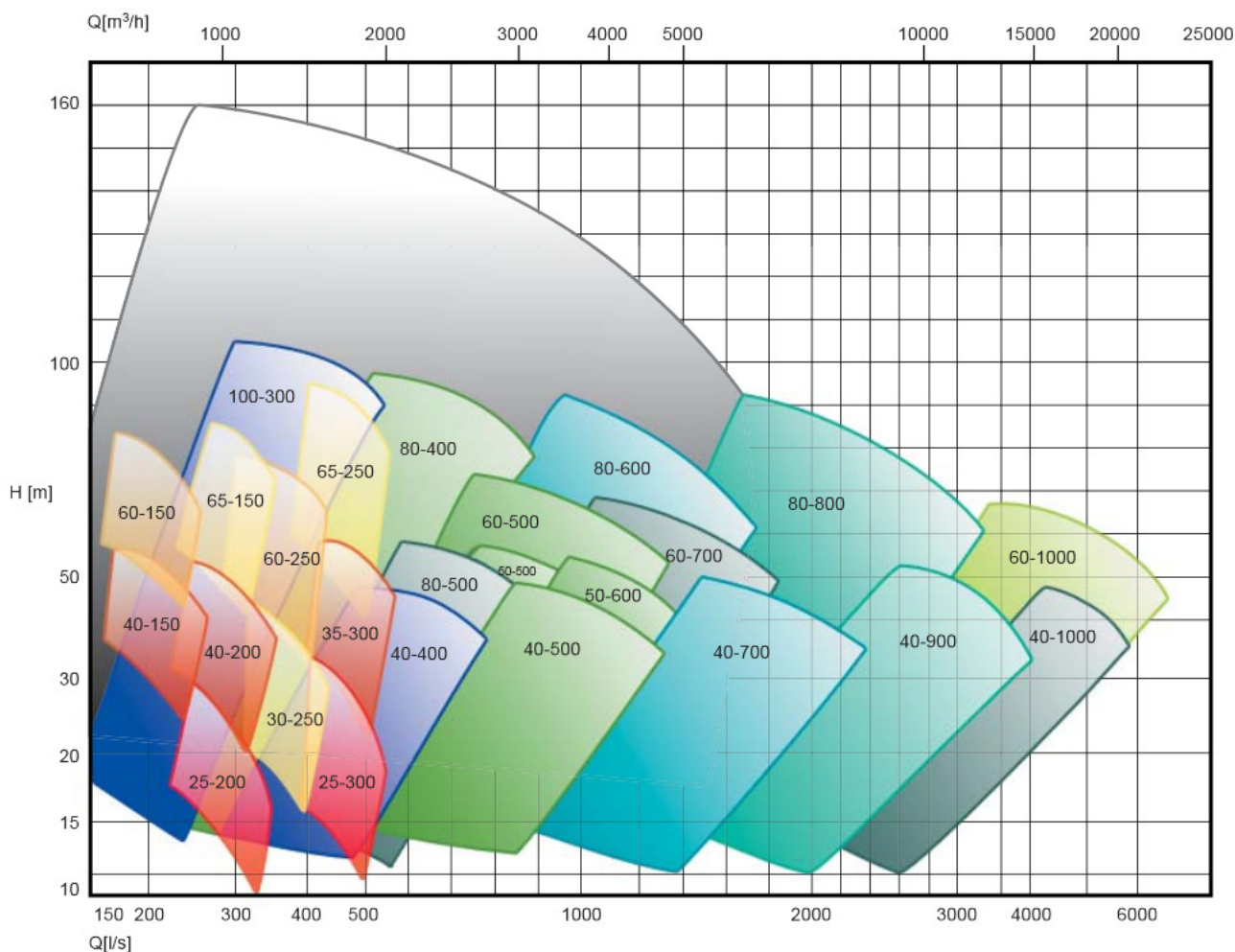


The results of intensive research and development

- Highest efficiency, lowest pulsation and a broad range of applications are ensured by optimum flow design
- Highest economy due to lowest energy consumption
- Simple maintenance due to innovative design

Characteristic curves

ANDRITZ Double Suction Pumps

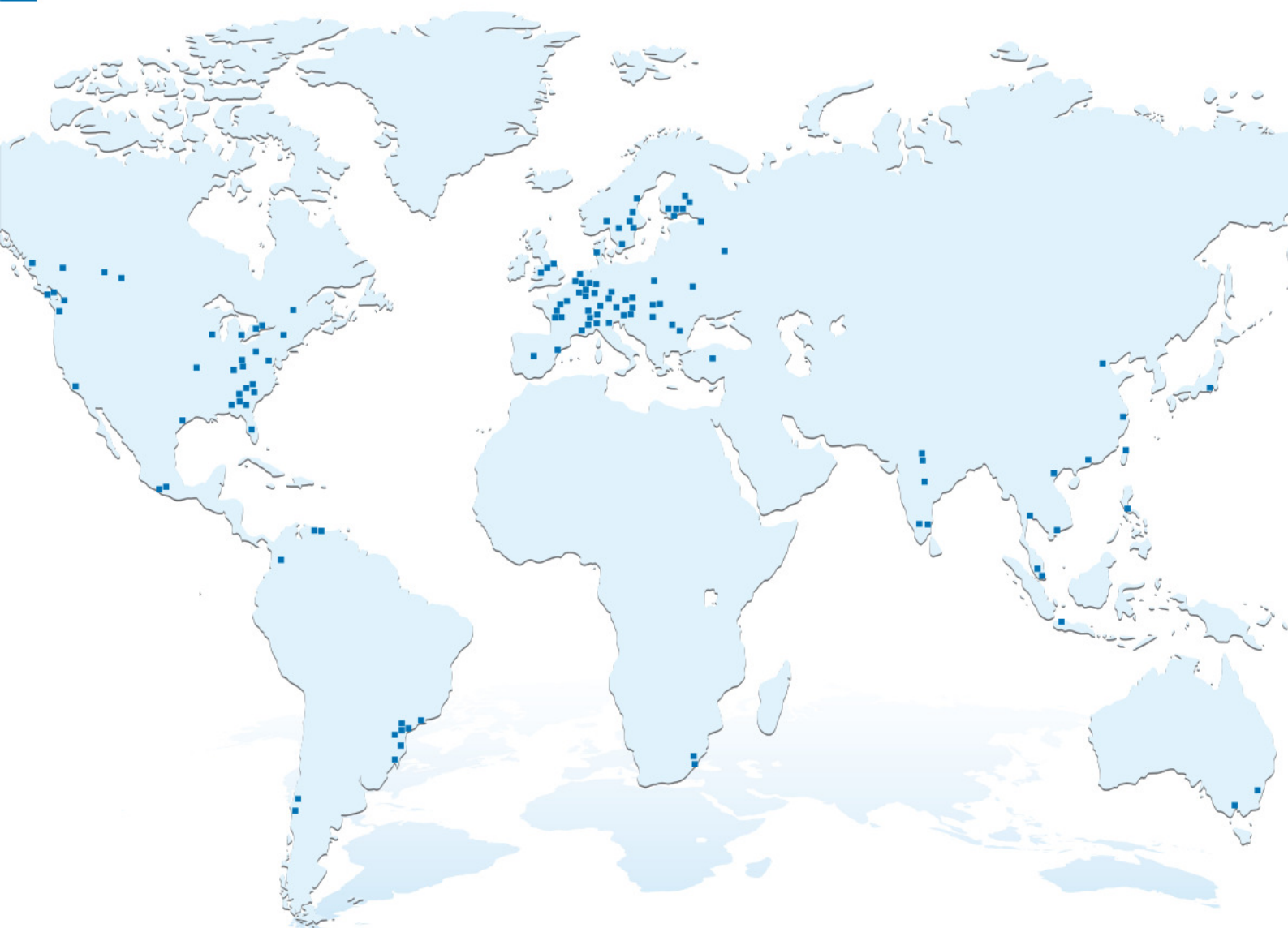


Material combinations

FP/FPS/SFWP Series	EN-GJL 250	EN-GJS-400-15	1.4460	1.4408	1.4021	1.4462
Impeller	■		■	■		
Volute casing	■	■	■			
Bearing housing	■					
Wear ring			■	■		
Stuffing box body				■		
Shaft					■	■
Pedestal	■					

European standard		US standard	
Number	Name	Grade	UNS
EN-JL1040	EN-GJL 250	Class 40B	/
EN-JS1030	EN-GJS-400-15	Grade 60-40-18	/
1.4460	X3CrNiMoN27-5-2	Grade 1A	J93370
1.4408	GX5CrNiMo19-11-2	CF8M	J92900
1.4021	X20Cr13	420	S42000
1.4462	X2CrNiMoN22-5-3	S32205	S32205

Close to our customers



ANDRITZ AG

Stattegger Strasse 18
8045 Graz, Austria
Phone: +43.316.6902-3020
Fax: +43.316.6902-413
marlene.eder@andritz.com

www.andritz.com